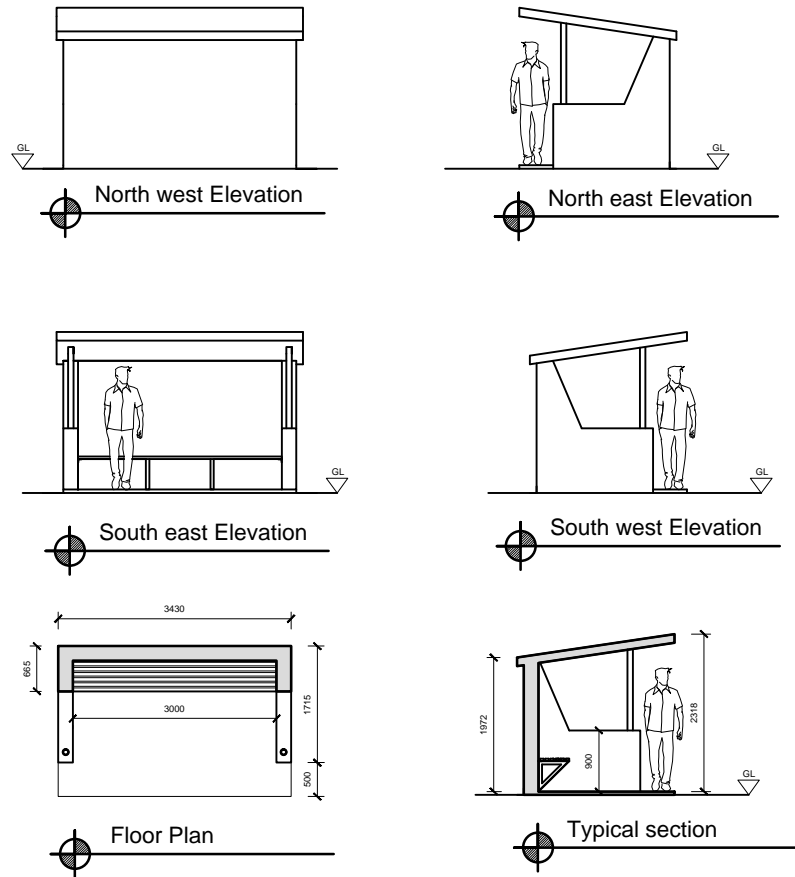


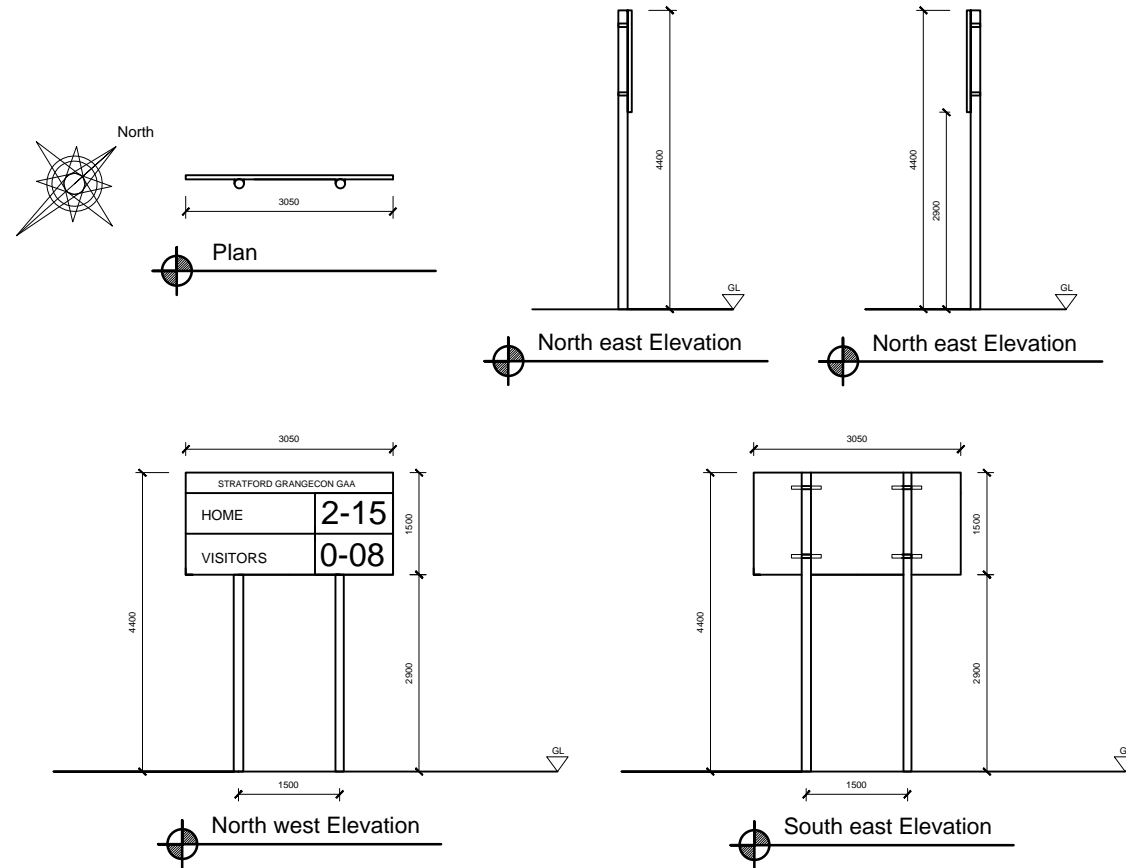
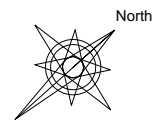
Design details of proposed dugouts (#1 & #2)

scale: 1:100



External Finish

- Smooth concrete roof
- Sand/cement nap plaster finish to walls
- Galvanized steel support posts
- Brushed concrete apron floor



Design details of proposed scoreboard

scale: 1:100

External Finish

- Black weather proof board
- 450mm LED numbers
- Galvanized steel support posts

PROJECT: PROPOSED NEW CLUBHOUSE EXTENSION
 @ WINETAVERN, STRATFORD-ON-SLANEY, CO. WICKLOW



TITLE:	Club House Development Score board & dugouts
CLIENT:	Stratford Grangecon GAA
SCALE:	1:100
DATE:	24-02-14
DWG. NO.:	005 A

Gerard O'Keefe
 Kee Design,
 986 Abbeylands,
 Castledermot,
 Co. Kildare
 ph. 087 6820162
 fax. 059 9144835
 www.keedesignarchitecture.com
 info@keedesignarchitecture.com